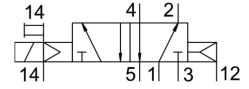
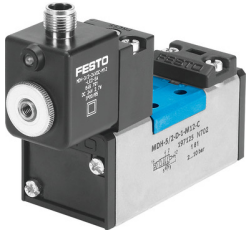


Air solenoid valve MDH-5/2-D-1-S-M12D-C

Part number: 540810

FESTO



Data sheet

| Feature | Value |
|--|--|
| Valve function | 5/2, monostable |
| Actuation type | Electrical |
| Width | 42 mm |
| Standard nominal flow rate | 1200 l/min |
| Pneumatic working port | Sub-base, size 1 as per ISO 5599-1 G1/4 |
| Operating voltage | 24V DC |
| Operating pressure | -0.9 bar ... 16 bar |
| Structural design | Piston gate valve |
| Reset method | Pneumatic spring |
| Degree of protection | IP65 |
| Nominal width | 8 mm |
| Width dimension | 43 mm |
| Type code | MDH |
| Exhaust air function | With flow control option |
| Sealing principle | Soft |
| Mounting position | Any |
| Conforms to standard | ISO 5599-1 |
| Manual override | Non-detenting |
| ISO code | 164 |
| Type of control | Pilot-controlled |
| Pilot air supply port | External |
| Flow direction | Reversible |
| Symbol | 00991300 |
| Lap | Overlap |
| Pilot pressure | 3 bar ... 10 bar |
| Switching time off | 36 ms |
| On switching time | 25 ms |
| Duty cycle | 100% |
| Max. positive test pulse with 0 signal | 3800 µs |
| Max. negative test pulse on 1 signal | 4900 µs |
| Coil characteristics | 24 V DC: 2.7 W |
| Permissible voltage fluctuations | +/- 10 % |
| Operating medium | Compressed air as per ISO 8573-1:2010 [7:4:4] |
| Information on operating and pilot media | Operation with oil lubrication possible (required for further use) |

| Feature | Value |
|------------------------|--|
| Vibration resistance | Transport application test with severity level 1 as per FN 942017-4 and EN 60068-2-6 |
| Shock resistance | Shock test with severity level 2 as per FN 942017-5 and EN 60068-2-27 |
| Temperature of medium | -10 °C ... 50 °C |
| Noise level | 85 dB(A) |
| Pilot medium | Compressed air as per ISO 8573-1:2010 [7:4:4] |
| Ambient temperature | -10 °C ... 50 °C |
| Product weight | 420 g |
| Electrical connection | M12x1 |
| Type of mounting | On sub-base With through-hole |
| Pilot air port 12 | Sub-base |
| Pilot air port 14 | Sub-base |
| Pneumatic connection 1 | Sub-base, size 1 as per ISO 5599-1 |
| Pneumatic connection 2 | Sub-base, size 1 as per ISO 5599-1 |
| Pneumatic connection 3 | Sub-base, size 1 as per ISO 5599-1 |
| Pneumatic connection 4 | Sub-base, size 1 as per ISO 5599-1 |
| Pneumatic connection 5 | Sub-base, size 1 as per ISO 5599-1 |
| Seals material | HNBR NBR |
| Housing material | Die-cast aluminum |